

**PARADISE PARK
MASONIC CLUB**
211 Paradise Park
Santa Cruz, CA 95060-7007



FIRST CLASS MAIL



**BULLETIN BOARD
SEPTEMBER 2004**

This bulletin is the official report of PPMC Board of Directors. It is published monthly and mailed on the second Wednesday following the monthly Board meeting.

PARADISE PARK MASONIC CLUB

BULLETIN BOARD

Jack's Notes September 2004

First I wish to apologize to the TREE COMMITTEE. I by-passed the Committee and authorized a member to have some roots ground down that were interfering with their house. I should not have done that! I will not do it again!

Now for some good news. It appears that we are making some progress in our negotiations with Fish & Game. I am hopeful that we will be able to have the dam in by next summer.

We have two bids in on completing the water system and are waiting for a third. When that comes in we can decide on the best bid, decide how to pay for it, sign a contract, and get it done! More on this later.

By the time you read this Marilyn and I will be somewhere between Amsterdam and Budapest on the beautiful Blue Danube River. See you in September.

Paradise Park Masonic Club
BOARD OF DIRECTORS

2004 - 2005 MEETING DATES

Executive Session 7:30 am

Open Meeting 9:00 am

09/18/04

10/16/04

11/20/04

07/02/05 Annual Meeting 7:00 P.M.

OCTOBER BULLETIN DATES CHANGED

The October bulletin will not be mailed on September 29 as usual, but will be mailed on October 5, 2004.

2003 - 2004 PPMC BOARD OF DIRECTORS and OFFICE STAFF

President: Jack Fisher
Email: fishjack@sbcglobal.net
Phone: 831-429-9397

Vice President: Frank Haswell
Email: tennistime@prodigy.net
Home Phone: 925-552-7095
Business Phone: 925-837-3320
Park Phone: 831-454-9105

Secretary: Fred Dunn-Ruiz
Email: dunnruiz@hotmail.com
Phone: 831-457-9681

Treasurer: Claude Lindquist
Email: drelaudeslindquist@yahoo.com
Phone: 831-457-9206

Recreation Director: Bill Eckard
Phone: 831-458-2020

Park Manager: Bob Koger
*Email: manager_ppmc@sbcglobal.net
Office Phone: 831-423-1530
Cell Phone: 831-345-0879

Park Secretary, Bookkeeper
*Email: secretary_ppmc@sbcglobal.net
bookkeeper_ppmc@sbcglobal.net
Office Phone: 831-423-1530

*Note: PPMC email addresses have an underscore between title and ppmc

Corrections

There were two errors in last month's bulletin; both of which are corrected in this bulletin. The second meeting of Yesterday, Today, and Tomorrow is September 22, not September 2. The Annual Meeting is 7/02/05, not 7/02/04.

IMPORTANT INFORMATION FROM THE BOARD

The Board would appreciate your input in writing to the Park office on the items 1-4 below.

1. PROPOSED BYLAW CHANGE: The Bylaws committee has recommended the following Bylaw change to the Board. The Board is publishing this now to get your input on possible improvement of the context and/or wording. At the July meeting, the Board consider including this proposed amendment on a future ballot of the membership.

The existing article follows with the deleted portions ~~struck-through~~ and additions in **bold and underlined**.

Article VII, Section 6: REMOVAL OF DIRECTOR- The members shall have the power to recall a member of the Board, ~~with or without cause~~ **for any reason, including lack of confidence, which must be stated on the petition.** If twenty-five (25) percent or more of the members submit a petition in writing to the Secretary of the Board requesting a Director be recalled, the Board shall conduct a recall election by mail within sixty (60) days of receiving the request, **provided the original petition was submitted to the Park office and stamped with the beginning date. All copies will then be made from the original and have the same date on them. The elapsed time for submission with signatures must not exceed sixty (60) days following the official stamped date. If the time limit is not met, the petition will not be valid and the process must be repeated.** If a majority of those voting are in favor of the Director(s) recalled, he or she shall be removed from office immediately.

2. HOME SALES: The board is concerned that many of the homes listed for sale are not selling. One possibility for this is that the homes are overpriced. The Board is discussing options that may bring asking prices to a realistic level. One option is placing limits on the length of time a home may be advertised in the bulletin.

3. PARK POST OFFICE: A review of the duties of the Office staff was recently conducted. It is felt that too much time was used handing out mail from the mailboxes when it could be better spent on other more important duties. Therefore, the Board is considering that if you have forgotten your mailbox key, you will be expected to go home and get it. Also at the recommendation of our Postmaster, only the following people will be authorized to enter the mailroom: Mail carrier; Mail sorters; Manager; Office Staff; Directors of the Board.

The staff will continue to hand out packages and certified or registered mail.

4. TOWN HALL MEETINGS: The Board is trying to determine if Town Hall Meetings are necessary. It seems that same people who attend the Monthly Board Meetings are the ones that attend. Let the board know if you want them to schedule regular Town Hall Meetings.

5. BAY TREES: The Board has approved the cutting of Bay Trees without going through the Tree Request process. You can tell a Bay Tree by the odor the leaves give off. If you aren't sure that the tree is a Bay Tree, check with the office.

6. PARENTAL CONTROL: The Board would like to remind all members that they are responsible for the behavior of the family and guests. We all need to behave in a respectful and responsible manner. This includes controlling the toys that your children have. The Board feels that any sort of gun that shoots a projectile (Bullet, BB or Paintball) is inappropriate in Paradise Park.

7. DECEMBER BOARD MEETING DATE CHANGED: The December Board Meeting will be on second Saturday of December; December 11th, not the 18th as previously announced.

8. WINTER STORAGE: As you close up from the summer and begin to store your garden furniture, etc., think about Fire safety and Health concerns. Storage of flammables too close to a structure is a fire hazard. Items covered with a tarp can create mosquito breeding grounds. Also think what your neighbors have to look at when you are finished. Blue tarps are an eye sore in our beautiful forest setting—they stand out like a sore thumb. Consider using a brown tarp; they cost about the same and are though they are a little harder to find, they are much less intrusive.

9. BOARD IN ERROR: The Board made two Bylaw errors at the September meeting. The secretary chaired the meeting, and the Board passed a resolution to not determine any item with less than three votes, both of which are violations of the Bylaws. We apologize and will do our best to see that we follow the Bylaws in the future.

ITEMS OF INTEREST

VOLUNTEERS NEEDED

RIVER CLEARING STARTED

The Park has received permission from Fish and Game to clear the brush and trees from the river corridor. F&G have imposed many restrictions, so please do not do any work without first checking with me. Please **sign up at the office to volunteer** to help. Work includes pulling weeds, using a chain saw to cut trees, and hauling debris away from river. We have a deadline of September 20 to complete all the work.

Hope to hear from you
Manager Bob

COMMITTEE OPENINGS

Volunteers are needed to serve on the Staking Committee (Bill Lind) and the Insurance Committee (Jim Langford). To volunteer or find more information about the duties of the committee contact the Committee Chairperson listed above.

IN MEMORIAM
Mary Downer, 5/17/04
Tulsa Eaton, 7/27/04

VOLUNTEER CENTER TRANSPORTATION PROGRAM

About the Transportation Program: The Volunteer Center's Transportation Program is designed to help people who can no longer drive or who have no other means of transportation.

How the Program Works: When you call in for assistance, we match your request for a ride with a volunteer driver who will pick you up at your home and take you to your medical appointment, grocery shopping or banking. There is **NO CHARGE** for this service; donations are accepted.

Rules: Only two rides per week. Drivers may only stop at approved destinations. Shopping trips are limited to one hour.

Call: 427-3435 from 10 a.m. to 4 p.m. seven to ten (7-10) days in advance.

ACTIVE COMMITTEES

If you wish to be on any of these committees please contact Jack Fisher at 831-429-9397:

<u>COMMITTEE</u>	<u>CHAIRPERSON</u>
Assessment Study	Malcolm Kirby
Budget	Diana Cook
Building	Bill Hardwick
By Laws	Bill Hardwick
Dam	Malcolm Kirby
Emergency Response Implementation Team	Doug Hipsley
Fire & Rescue	Greg Laskey
Flea Market 04	Charlotte
Reynolds	& Tiny Sand
Fleet	Greg Laskey
Historical	Barry Brown
Industrial Safety	TBA (Ted Keller)
Long Range Planning	Chuck Buchanan
Orientation	Anna & Bill Lind
Past Presidents	Bob Biendle
Recreation	Bill Eckard
Staking	Jackie Rundell
Tree	Judy Gleockler
Water/Roads	TBA
Waste management	Diana Cook

YARD WASTE LIMITS

Please cooperate with the crew and limit the length of limbs and branches put into yard waste piles to less than 2 feet. When you don't do this, then the crew must stop and cut them.

WEST NILE VIRUS

Report birds believed to have died within the past 24 hours, especially crows, ravens, scrub jays, stellar jays, magpies, sparrows, finches and red-tailed hawks, to the California Department of Health Services West Nile Virus hotline (887) 968-2473 (887-WNV-BIRD). or on the internet westnile.ca.gov,

THANK YOU, SIGN REPAIR VOLUNTEERS!

Paradise Park address signs and frame boards are looking spiffy due to the continued efforts of Bob Sand, Don Moore and Mary Jo Dunn-Ruiz. Bob has crafted and replaced the old redwood address sign frames through the Park – a huge job! Don Moore has cut, drilled and painted the address boards in preparation so Mary Jo, with generous help from Lynn Raadik, can stencil, outline and hand paint our names, addresses and street names. Many signs were out of date, peeling paint or missing entirely. The frames were rotted and deteriorated. Through the combined volunteer work of Bob, Don, Lynn and Mary Jo, our Paradise Park signs are looking fresh and new.

THANKS FOR THE DONATION

The Board would like to thank the Park Member who generously donated \$3000 for benches, scoreboards and signs at the new bocce ball courts in the picnic grounds.

HISTORICAL COMMITTEE

THANK YOU to the Historical Committee. In this bulletin, you will see pictures of the cannons and an article about the area at the end of Joppa where the cannons were located. This is the work of the Historical Committee chaired by Barry Brown. The committee is working hard to replace all of the old Historical markers throughout the Park. As they become available, we hope to publish the pictures and articles in upcoming bulletins for you to see and even cut out and save, if you so wish.

WATCH FOR THE HYDRANGEA THIEF

The past couple of years in September/October, the Park has had reports of a white male, about 6'2", 200+ lbs., light brown short curly hair, driving a dark green Chevy van w/ license 2LEX539 coming into the Park and cutting hydrangea blossoms without permission.

If you see this person, call the sheriff's office immediately and report the incident.

AUDITOR REPORT AVAILALBE

The Auditors report for the fiscal year 2003-2004 is now available for you to review in the office.

ALMONER'S FUND

The Paradise Park Almoner's Fund was established by the Men's Club and is operated by volunteers Bill Uber, Doug Hiplsey and Vern Gordon. The fund's income is through fundraisers and donations from members. The fund is distributed anonymously in cash to members of our community who are in need. The Almoner has total control of dispersing alms. Any member may ask the Almoner, Bill Uber, to check on a member whom they think may need help.

Your generous donations made out to the PPMC Almoner's Fund may be sent to Bill Uber, 753 Paradise Park.

The giving of alms is what true Masonry is all about. The concept is derived from the Bible - Matthew 6:1.

CLAM BAKE

A big **THANKS** to Jim & Natalie Clark and Jim & Pam Wilson for hosting the Clam Bake again this year. It was reported that \$550 were raised for the Almoner's Fund. Thanks to all of you who attended to make this a great and successful event.

HOME TOUR

A big **THANKS** to Billy Uber for organizing the Home Tour. This year's tour raised \$710 for the Almoner's Fund. Thanks are also due to all the homeowners who showed their homes and those persons who donated food for the reception and to PPMC member Mohammad Alam of Fancy Flowers who donated the flowers.

MASONIC OUTREACH

New day, New format

The Masonic Outreach program, which comes to Paradise Park once a month, will begin coming on **THE THIRD THURSDAY** each month, beginning with September. Solidad Martinez, the Admissions person for the Masonic Homes, will be added to the persons coming this month. If you have any questions regarding this Program, call Bill Uber at 426-0614. This is also a service spearheaded by the Almoner's Fund

TREASURER'S REPORT

Beginning this month you will find a more detailed accounting of our budget to make it more informative. The major budget categories are highlighted in the chart below. Our annual budget is \$512,800 which apportions into the following major categories: employee expense (40%), member services (23%), taxes (11%), insurance (9%), repair and maintenance (8%), office expenses (6%), and other expenses (3%).

The treasurer's financial report is slightly changed as well as more detailed: the four columns list the average monthly budget (new), actual income/expenses to date (same), budgeted expenses to date (replaces "left in budget"), and budgeted expenses for the year (same). Of course, if our actual expense (bottom column two) is less than the budgeted expense (\$512,800 bottom column four) at the end of the year, we will finish with a budget surplus. We remain on track this month with \$123,337 spent which is somewhat below the \$128,200 budgeted amount. (Note: Since actual monthly expenses vary greatly around the average monthly budget amounts, they are not very useful so are not listed.)

Incidentally our annual budget of \$512,800 amortizes to \$42,733 monthly (1/12), \$9862 weekly (1/52), and \$1405 daily (1/365). These are convenient benchmarks for judging our spending and assessing how effective our saving efforts (reducing costs and/or increasing income) may be.

We are in the process of shifting our savings and CD deposits around to obtain higher interest returns and higher FDIC insurance coverage while maintaining liquidity. Hopefully this shifting will be mostly completed this month so that the increased interest income results can be reported to you in the next Bulletin.

Now about budget savings by reducing costs. If you scan down the annual budget in the last column, among the largest expenses are business insurance (\$47,000 - includes fire and liability) and workman's compensation insurance (\$17,000). The premiums and coverage's of our policies will be reviewed this month with the hope of widening coverage and/or reducing premiums. If you have expertise in these areas and would like to help, your suggestions are solicited and welcomed. The insurance committee is assisting in the review.

In passing, notice that water is the highest single expense item in the budget (excluding employees). Although \$70,000 annually for water may seem high, this amount is equivalent to a monthly water charge of about \$15/month per member (\$70,000/12 months/391 members). It was anticipated that new water lines would eliminate leaks which would reduce the water cost. Every 5% of leak reduction (or usage) saves us about \$3,500 or about 3 days of budget expense.

(Treasurer's Comment)

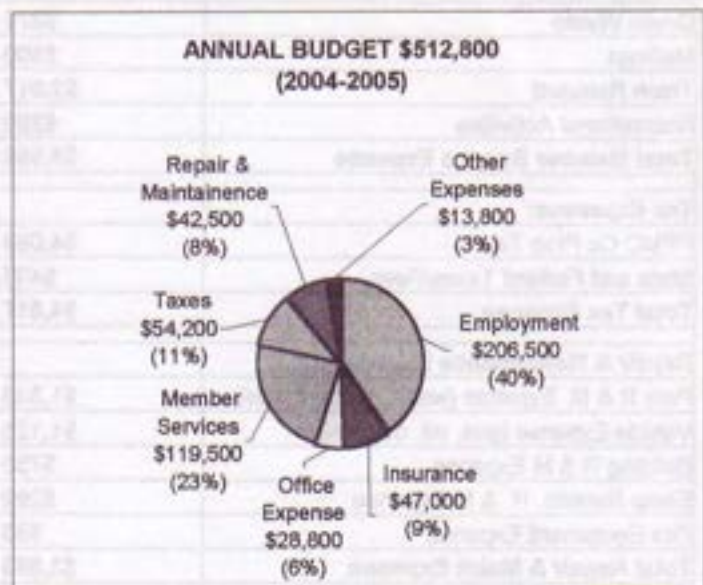
My View from Shangri-La
(Lost Horizon, Columbia pictures,
Dir. Frank Capra, 1937).

Advisor Mr. Chang speaking to diplomat Mr. Conway:

*You would be surprised my dear Conway how a little
courtesy all around helps to smooth out the most
complicated problems.*

Since we all live in Paradise, should we not try to practice
this wise thought?

Claude Lindquist



REMINDER CONCERNING TREE WORK

Before you trim or cut down any tree, please check with the Office. Copies of the current Tree Rules are available at the Office.

REMINDER: SPECIAL TRASH PICK-UP

If you have construction debris, furniture or other things to be hauled to the dumps, CALL Waste Management at 1-800-665-2209

FINANCIAL REPORT FOR THE THREE MONTHS ENDING JULY 2004

	Monthly Budget	Inc/Exp to Date	Budgeted to Date	Annual Budget
Income:				
Member Assessments and Dues		123470		\$493,062
Membership Transfer Fees		1300		\$4,000
Member Finance Charges and Penalties		80		\$5,200
Member Services: Debris and Delivery		20		\$4,000
Facility Use Fees		800		\$2,000
Miscellaneous Income		19947		\$300
AT&T Comcast (7% Royalty)		1593		\$6,400
TOTAL INCOME	\$42,914	\$147,210	\$128,741	\$514,962
Employee Expense:				
Employee Salaries	\$11,842	\$35,529	\$35,525	\$142,100
Employee Taxes and Benefits	\$3,950	\$5,718	\$11,850	\$47,400
Worker's Compensaton	\$1,417	\$4,633	\$4,250	\$17,000
Total Employee Expense	\$17,208	\$45,880	\$51,625	\$206,500
Insurance:				
General Business	\$3,917	\$11,912	\$11,750	\$47,000
Total Insurance Expense	\$3,917	\$11,912	\$11,750	\$47,000
General Office Expense:				
Supplies	\$625	\$3,779	\$1,875	\$7,500
Postage and Communications	\$692	\$2,163	\$2,075	\$8,300
Utilities (Electricity, propane)	\$1,083	\$3,076	\$3,250	\$13,000
Total General Office Expense	\$2,400	\$9,018	\$7,200	\$28,800
Member Service Expense:				
Water	\$5,833	\$17,653	\$17,500	\$70,000
Security/Safety	\$83	\$661	\$250	\$1,000
Green Waste	\$375	\$1,045	\$1,125	\$4,500
Mailings	\$500		\$1,500	\$6,000
Trash Removal	\$2,917	\$8,898	\$8,750	\$35,000
Recreational Activities	\$250		\$750	\$3,000
Total Member Service Expense	\$9,958	\$28,257	\$29,875	\$119,500
Tax Expenses:				
PPMC Co Prop Tax	\$4,083	\$7,507	\$12,250	\$49,000
State and Federal Taxes/Fees	\$433	\$184	\$1,300	\$5,200
Total Tax Expense	\$4,517	\$7,691	\$13,550	\$54,200
Repair & Maintenance Expense				
Park R & M Expense (water, trees, roads)	\$1,333	\$4,502	\$4,000	\$16,000
Vehicle Expense (gas, oil, maint)	\$1,125	\$1,091	\$3,375	\$13,500
Building R & M Expense	\$750	\$1,215	\$2,250	\$9,000
Equip Rentals, R & M Expense	\$292	\$457	\$875	\$3,500
Fire Equipment Expense	\$83		\$250	\$1,000
Total Repair & Maint Expense	\$3,583	\$7,265	\$10,750	\$43,000
Other Operating Expenses:				
Dues/Subscriptions	\$50	\$360	\$150	\$600
Audit	\$333	\$5,170	\$1,000	\$4,000
Legal	\$625	\$7,507	\$1,875	\$7,500
Historical Committee	\$83		\$250	\$1,000
Other Miscellaneous Expense	\$58	\$277	\$175	\$700
Total Other Operating Expense	\$1,150	\$13,314	\$3,450	\$13,800
TOTAL EXPENSE	\$42,733	\$123,337	\$128,200	\$512,800
Some Balances	Bank deposits/ CDs	\$982,690	SBA Loan 4%, 202	\$323,143

ANNUAL LABOR DAY CELEBRATION



Saturday, September 4, 2004 Events

Tennis Tournaments - Section 4 Tennis Court
 Junior's - Draw at 8:45AM Senior's - Draw at 9:45AM
 Participants must check in before Draw

Shuffleboard Tournament - 10AM Keystone Way/Royal Arch
 Ping Pong Tournament - 10AM Social Hall
 Horseshoe Tournament - 12 Noon Covered Bridge

Wienie Roast Pot Luck - 5:30PM Picnic Grounds
 Labor Day Celebration Dance - 8-12PM Picnic Grounds



Sunday, September 5, 2004 Events

Senior Tennis Tournament Finals - 9AM Section 4 Tennis Court

Cribbage Tournament - 10AM Social Hall
 Volleyball Tournament - (After Tennis Finals) 1PM ? Ball Field

Kid's Sand Castle Tournament - 2PM Middle Beach
 Kid's Mud Ball Tournament - 2PM Middle Beach
 Ice Cream Eating Contest - 2PM Middle Beach

Concession Stand Help Needed - Call Bill Eckard 458-2070
 or Park Office 423-1530





Castle is Back by Astro Jump

Saturday, Sept. 4th
4PM to 7PM at the
Picnic Grounds
Followed by Pot Luck
5:30PM - Social
6:00PM - Eating
**Dancing on the
Basketball Court**

**7PM
to
10PM**



PARADISE PARK QUILTERS' THIRD ANNUAL QUILT RAFFLE 2004 TO BENEFIT THE PARADISE PARK MEN'S CLUB ALMONER'S FUND

74" x 74" MACHINE-PIECED AND QUILTED
HAND-APPLIED
(ON DISPLAY IN THE OFFICE)

SUGGESTED DONATIONS: \$5 / TICKET
OR
\$20 / 5 TICKETS

PLEASE MAKE CHECKS PAYABLE TO:
"PPMC ALMONER'S FUND"

RAFFLE DRAWING WILL BE HELD ON
SUNDAY, SEPTEMBER 5, 2003, 3PM-ISH
AT MIDDLE BEACH

Paradise Park Masonic Club

SIMPLY YOGA

Everyone Welcome
—no experience needed—



EVERY
Thursday
10 - 11:30 AM
Social Hall

PLEASE:

- Arrive Early
- Wear Comfortable & Warm Clothing
- Bring Blanket/Mat
- Have Empty Stomach

For more information please telephone:
4 2 0 - 1 0 0 8

UP COMING EVENTS

EMERGENCY SIREN TESTS

At 1:00 P.M.
on Board Meeting Saturdays

KNITTIN' KITTENS LADIES' CANASTA

First Monday each Month
Social Hall, 11:30 A.M.

*Monday, September 13, 2004
Monday, October 4, 2004

* Indicates 2nd Monday

Sponsored by Pat Rundell

BINGO

Third Wednesday each month
Social Hall, 6:30 P.M.

Wednesday, September 15, 2004
Wednesday, October 20, 2004

MEN'S CLUB

First Wednesday of the Month
Small Social Hall, 1130 A.M.

October 6, 2004

Guest Speaker, Deputy Chief Matt Tracy
of the Santa Cruz Fire Department

NEW TRAINING FOR CPR/AED

The next CPR/AED (Defibrillator) training will be
from 9-4 on both Saturday and Sunday,
September 25 and 26, 2004.

To sign up for this training session or to get more
information, please contact Ted Keller at
(831) 425-2646.

MAKE UP FOR MISSED CPR/AED CLASSES
will be during the new training on Sept. 25-26.

MASONIC OUTREACH

Third Thursday of each month
Small Social Hall, 10 A.M.-noon

September 15, 2004

October 15, 2004

Kristi Kampe
Solidad Martinez

Yesterday, Today, and Tomorrow:

A History Class

Presented by Dr. Laina Farhat-Holzman

A fee of \$40 for materials will be charged.

Classes run from noon 'til 2:30; (bring a bag lunch)
in our Social Hall.

*September 8: History of Secret Societies (including the
possible Knights Templar/Masonic connection)*

*September 22: Inside the Troubled World of Islam
(Saudi Arabia, Iran and Pakistan--different problems)*

*October 6: Globalization --- beyond economics (the
globalization of religion and other bad Ideas)*

October 13: The Iraq War (where it stands now)

Laina Farhat-Holzman is a writer, historian and lecturer. She has conducted the annual Great Decisions classes in Aptos for the past four years. Laina taught World History and Islamic Civilization at Golden Gate University. She has authored three books: one on comparative religion, another on global religious fundamentalism, a third on Persian folklore. She is working on a fourth on Nation Building. She writes a regular column for Good Times Magazine.

To register or for more information, contact Lynn Raadik (425-1038 or Lraadik@ixnetcom.com)

SANTA CRUZ LODGE #38 ANTIQUE SHOW

The First Annual Masonic Fall Antique show will be held on Sunday Sept. 19th at the SC-SLV Lodge on Branciforte Ave. in Santa Cruz. The show is a fund-raiser for the Lodge. We are selling spaces to vendors at \$60.00 for a 16'x10' area. We have around 20 dealers committed along with six individuals who want to sell. Items for sale should be at least 20 years old.

The set up time will begin at 6:00 a.m. on the 19th and the show will be open to the public at 9:00 a.m.. Admission is free. We are advertising in the Antique Journal, local newspapers, T.V. and possibly radio. Rainbow and Job's Daughter's will be putting flyers on cars at the flea market and around various neighborhoods. This is a great opportunity to make some money either for yourself or your favorite charity. For more information call Dave Studer at 458-0663.

RECREATION REPORT

Living in the redwoods, one never knows when the seasons change. The "feathers" are always coming down and it seems to stay a cool constant temperature. One way to know that fall is here is when the games and activity pick up and Labor Day draws near. We have a full slate of activities. Check the bulletin boards and if all else fails, see Karen in the office! Come and support the participants as they pursue their quest for a "Medal". Everyone is a winner, the memories we'll have will see to that. Buy a hot dog or whatever at the concession stand near the Section Four tennis courts and support your Recreation Activities.

I'd like to "thank" the volunteers that put the activities together. The Dobson family, (shuffleboard, horseshoe and volleyball); Fred Dunn-Ruiz and Frank Haswell, (tennis, end of year dance); Cal De Vecchis, (ping-pong); Lloyd Ames, (cribbage) and the king and queen of Labor Day, Tiny and Bob Sand, (Beach Activities). These are just the tips that the general public see, when you buy a hot dog at the concession stand or go to a wienie roast, thank the person across from you. Together we're Paradise Park and Paradise Park is you.

The Bocce Courts completion date is still in question as this goes to print, we will have a tournament this fall so sign up in the office. School of instruction will also be offered.

By now the Section Parties are behind us and so is the Quacker Regatta. A special thanks to Betty and Cal Crawford; Char and Jim Reynolds for manning the concession stand at the Regatta and for Rod Monti, Bill Uber and Bill Lind's assistance at the Regatta.

Next month will give you the list of "medal" winners for Labor Day. Each time you look in the mirror you will see the true winner at Paradise Park!

Any suggestions and assistance should be directed to your recreation Committee: Ms. Lois Hardy, Ms. Karen Eneboe, Ms. Lisa Leong, Mr. Cal Crawford, and Mr. Craig Little.

Thank you for another successful month at Paradise Park,

Your liaison for the Board for food, fun frolic and fellowship, Bill Eckard

HASWELL TRUST

Vance and Marion Haswell began coming to Paradise Park since the early 1930's after my grandfather built on an allotment in Section #4. Both Mom and Dad were active in his lodge, Shriners and Eastern Star. I still remember in 1964 when dad was Master of his lodge, we barely would see him! When Joyce and I were young, Mom "moved" down here from the Bay Area for the summers with both of us in tow. We were always using the tennis courts, the swim holes, the social hall, the picnic area and the green swings. We even used the streets for pickup games of baseball when the Park wasn't too full of visitors.

So, for us, the Park has been an important part of 4 generations (so far). Years ago my parents realized the importance of the Park in their lives and in ours. When they began their estate planning, it was important to them to "pay back" the Park for the many "free" things that the Park offered to us as a family. It's something that ALL of us should consider. When Mom & Dad called to say this was important to them, I was excited by their decision. In effect, it's painless because of current tax laws. The Vance and Marion Haswell Trust was in an enviable position because of the preplanning Mom & Dad did. They actually reduced the taxes they would have paid by making this donation.

The selection of the fish ladder for the dam and the social hall as the first two projects from their trust is a perfect tribute to them and for them. I would hope that many of you would consider the same for your estates.

Frank Haswell

SIMPLYOGA News

"Afterwards my arms were so relaxed they felt like jelly"—SIMPLYOGA Participant

The response to the August SIMPLYOGA classes has been so heartwarming that we will be continuing to meet throughout September (and maybe even October). Everybody is welcome to drop-in Thursday mornings just before 10 am. The Social Hall is a bit chilly so please wear warm layers of comfortable clothing and bring a blanket and/or mat.

—Tripura

THE 2004 FLEA MARKET

Thank you, members of the Park, for donating thousands of items and being great buyers and having fun. This year there were over 60 volunteers. I've never worked with such dedicated, dependable and stick-to-itiveness people. They worked together so well and took charge of what ever had to be done.

Preview night was a great success because of your attendance and Karen Eneboe and her organizational skills. Thanks to Noni Downing for all the homemade hors d'Oeuvres and to the young ladies who served them. They were so charming.

The Flea Market started in the mid '80's and is such a great tradition and community project. I know Bill Eckard is looking for a chairperson for 2005. The Chairperson can handle this project in many ways. I chose to do a little throughout the entire year, but that does not have to be the case. Most past Chairpersons did it over a more consolidated period of time. It's work, but fun and rewarding both personally and for our Park. Don't be afraid to take the job. I'll be here to assist in any way I can and hope someone will step up to continue our tradition.

I've enjoyed the last two years as Chairperson of the PPMC Flea Market. I met so many wonderful people and am a richer person for the experience.

The Flea Market was a huge success. **Our** total for 2004 is \$6,083. Add the 2003 total of \$8,230 for a grand total of \$14,313 for my two years as Chairperson with your tremendous support!

With great appreciation,

Char Reynolds

Notes on Preview Night of the Flea Market, July 23, 2004

By backward accounting practices, it was concluded that we had 117 and 2/3 people attending the Preview Night, with additional children under 8. Many votes cast identified the evening's snacks as the *piece de resistance* of the evening. Chef Noni Downing, with her assistant/daughter Shari Downing Crouch (who also designed and made most of the aprons), helper Betty Gladding, and servers Jenessa Crouch, Jessie Crouch, Shannon Swanson, and Elena Traboulsi (who ably sewed her own apron) kept us well and deliciously served. Steve Taylor again served us as Master of Ceremonies and Auctioneer and kept us up to date and moving along through the Raffle items, the Silent Auctions and the Outloud Auction. Richard Sturgeon, Rick Decker, and Ray Hoffman kept encouraging us to be a raffle winner. Connie Fisher's Fashion Show featured Charlise Harris, Bob Biendle, and Dick Fisher, modeling items that must have been irresistible, at least on them. And wasn't that Lois Hardy we saw, modeling her Honeymoon outfit, from Paris, MN, which was up for auction? More FUN! See what a good thing Raffles, Silent Auction, Auctions, and Flea Markets can be!!!! Here are the various winners:

Raffles

Egyptian Vase, Marty Brown;
Delta Big Wing Kite, Sara Smith;
Mr. Gumby, Bob Biendle;
Victorian Napkin Ring pair, Shirley Moore; Jennifer Moore
Porcelain Frame w/Album, Tom Allan;
Throw Rug, Viola Allan.

Silent Auction

Antique Telephone Reproduction, Connie Fisher;
Brass Carriage Lamp pair, Dave Studer;
Geodesic Globe, Melinda Williams;

Kincaid-type Oil Painting, Shirley Moore;
English Baby Doll Buggy, Barbara Taylor;
Spanish Girl, print, Dick Fisher.

Auction

Parrot Cage, Jack Fisher;
Garden Covered Bridge, Noma Hardwick;
Crystal Perfume Bottle, Joanne Nelson;
Plush Black & White Tiger, Ellen Smith;
Football & Basketball Card Collection, Linda Fitzpatrick; Doug Banks Surfboard, Linda Dyson-Weaver; L. Hardy's Honeymoon Outfit, Bob Sand (for Tiny).

Thanks to all who attended and participated. Fun was the idea; did you have your share? Hope so. Oh, the Recreation Fund netted \$764 for the Preview Night. Thanks again,

Karen Eneboe

**PARADISE PARK
CALENDAR OF EVENTS**

<u>DATE</u>	<u>EVENT</u>	<u>Venue</u>	<u>MEMBER/Chair</u>
September 2004			
1-Wed.	Men's Club 11:30	Small Social Hall	R. Hoffman
2-Thu.	Simply Yoga 10-11:30	Large Social Hall	T. Anand
4-Sat.	Labor Day Activities - check posters	various	various
4-Sat.	Castle Jump 4-7pm	Picnic Grounds	Rec. Cmt.
4-Sat.	Hot Dog Potluck 5:30	Picnic Grounds	???
4-Sat.	Dance 7-ish - 10-ish pm	Picnic Grounds	F. Dunn-Ruiz
5-Sun.	Labor Day Activities - check posters	various	various
6-Mon.	OFFICE CLOSED - LABOR DAY	Office	Management
7-Tue.	Coffee 9-11am	Small Social Hall	???
7-Tue.	Tole Painting 7-10	Small Social Hall	A. Walters
8-Wed.	History Class 12-2:30pm	Small Social Hall	L. Raadik
9-Thu.	Simply Yoga 10-11:30	Large Social Hall	T. Anand
11-Sat.	Rainbow Girls Overnight - all day	Large Social Hall	S. Reddick
11-Sat.	Amaranth Picnic 10am-3pm	Picnic Grounds	O. Ward
11-Sat.	Hot Dog Potluck 5:30	Picnic Grounds	Hosts needed
12-Sun.	Rainbow Girls Overnight - until noon	Large Social Hall	S. Reddick
13-Mon.	Knittin' Kittens 11:30 - 4:30	Small Social Hall	P. Rundell
14-Tue.	Coffee 9-11am	Small Social Hall	???
14-Tue.	Tole Painting 7-10	Small Social Hall	A. Walters
15-Wed.	Bingo 6:30-8:00pm	Large Social Hall	Y. & M. Jones
16-Thu.	Simply Yoga 10-11:30	Large Social Hall	T. Anand
17-Fri.	Masonic Outreach, Kristi Kampel 10am-12pm	Small Social Hall	Masonic Home
18-Sat.	BOD Open Meeting 9am	Small Social Hall	J. Fisher
18-Sat.	Recreation/Activities Cmt. Mtg. 3pm	Small Social Hall	B. Eckard
18-Sat.	Hot Dog Potluck 5:30	Picnic Grounds	hosts needed
19-Sun.	Memorial Service 10am	Large Social Hall	B. Uber
21-Tue.	Coffee 9-11am	Small Social Hall	???
21-Tue.	Tole Painting 7-10	Small Social Hall	A. Walters
22-Wed.	History Class 12-2:30pm	Small Social Hall	L. Raadik
23-Thu.	Simply Yoga 10-11:30	Large Social Hall	T. Anand
25-Sat.	AED/CPR Training 8am - 4pm	Large Social Hall	T. Keller
25-Sat.	Hot Dog Potluck 5:30	Picnic Grounds	hosts needed
26-Sun.	AED/CPR Training 8am - 4pm	Large Social Hall	T. Keller
28-Tue.	Coffee 9-11am	Small Social Hall	???
28-Tue.	Tole Painting 7-10	Small Social Hall	A. Walters
30-Thu.	Simply Yoga 10-11:30	Large Social Hall	T. Anand
October 2004			
2-Sat.	VNA Flu Immunization Clinic 9-12	Small Social Hall	VNA
2-Sat.	Family Picnic 10-8pm	Picnic Grounds	T. Cooper
4-Mon.	Knittin' Kittens 11:30 am - 4:30 pm	Small Social Hall	P. Rundell
5-Tue.	Coffee 9-11am	Small Social Hall	???
5-Tue.	Tole Painting 7-10	Small Social Hall	A. Walters
6-Wed.	Men's Club 11:30	Small Social Hall	R. Hoffman
6-Wed.	History Class 12-2:30pm	Large Social Hall	L. Raadik
7-Thu.	Simply Yoga 10-11:30	Large Social Hall	T. Anand
12-Tue.	Coffee 9-11am	Small Social Hall	???
12-Tue.	Tole Painting 7-10	Small Social Hall	A. Walters
13-Wed.	History Class 12-2:30pm	Small Social Hall	L. Raadik
14-Thu.	Simply Yoga 10-11:30	Large Social Hall	T. Anand
15-Fri.	Masonic Outreach, Kristi Kampel 10am-12pm	Small Social Hall	Masonic Home
16-Sat.	BOD Open Meeting 9am	Small Social Hall	J. Fisher
16-Sat.	Recreation/Activities Cmt. Mtg. 3pm	Small Social Hall	B. Eckard
16-Sat.	Potluck 5:30	Picnic Grounds	?
19-Tue.	Coffee 9-11am	Small Social Hall	???
19-Tue.	Tole Painting 7-10	Small Social Hall	A. Walters
20-Wed.	Bingo 6:30pm	Large Social Hall	Y. & M. Jones
21-Thu.	Simply Yoga 10-11:30	Large Social Hall	T. Anand
26-Tue.	Coffee 9-11am	Small Social Hall	???
26-Tue.	Tole Painting 7-10	Small Social Hall	A. Walters
28-Thu.	Simply Yoga 10-11:30	Large Social Hall	T. Anand

Paradise Park Masonic Club

MEMBERSHIP APPLICATIONS PENDING

<u>Applicant</u>	<u>Date posted</u>	<u>Seller</u>	<u>Allotment</u>
<u>MEMBER CANDIDATE</u>			
Donald Joseph Radder	08/09/04	Jerry Morgan	343 The Royal Arch
Joseph Del Core	07/30/04	Franklin Avery	115 Keystone Way
<u>ASSOCIATE MEMBER</u>		<u>MEMBER</u>	
Linda Ingalls Haswell	08/11/04	Frank Haswell	525 St. Ambrose Street
Shirley Jean Radder	08/09/04	Donald Joseph Radder	343 The Royal Arch
Michael K. Pottinger	08/06/04	Lauren C. Pottinger	144 St. Alban Street
Hilde Rundell	06/15/04	Ron Rundell	334 The Royal Arch
Deborah Jane Crogan	06/10/04	William E. Crogan	202 Keystone Way
Betty Lou Dreiling	06/02/04	Robert Charves	600 Keystone Way
Marian E. Sibley	05/21/04	Richard T. Sibley	280 Keystone Way
Mary-Lynn Brecht	05/18/04	Betty H. Brecht	377 Hiram Road
April Duke	03/31/04	Nancy Kell	128 Keystone Way
<u>ALTERNATE ASSOCIATE MEMBER</u>		<u>MEMBER</u>	
Laura Ellet St. Laurent	08/11/04	Frank Haswell	525 St. Ambrose Street
Julie Kathleen Radder	08/09/04	Donald Joseph Radder	343 The Royal Arch
Thomas Clayton Brown	06/01/04	Norman Clayton Brown	677 St. Paul Street
Amanda L. Cooper	03/16/04	Timothy B. Cooper	614 Keystone Way

- - - **LETTERS FROM THE MEMBERSHIP** - - -

Your Letters From the Membership and articles of interest to the membership are welcomed for publication. Deadline for submitting articles is the Monday following the Board meeting. Submit articles to Fred Dunn-Ruiz, 606 Paradise Park or dunnruiz@hotmail.com in Microsoft word format. Letters to the Editor must be limited to 150 words (longer letters are subject to cutting), contain no negative reference to individuals, and be accurate regarding legal or procedural issues--omitting hearsay and gossip.

OUR GARDEN GROWS

Dick and I want to personally thank Genevieve Davidson who has kept the Social Hall Garden looking so beautiful in our absence.

Genevieve has added plants and flowers from her own garden which gives it an enchanting vision.

Dick and I have added the birdhouse bench. Also added: three yellow birdhouses donated by David Studer.

The social Hall Garden is now complete. I think all of you enjoy seeing our ideas blossom from dreams to reality as much as we do. *Dick & Connie Fisher*

LETTER OF THANKS

WE WOULD LIKE TO THANK THE 2003/2004 BOARD OF DIRECTORS FOR THE GREAT JOB THEY HAVE DONE, GETTING THE PARK BACK ON TRACK. BARBARA MONTI--GETTING US BACK WITHIN A BUDGET. BILL ECKARD--WITH RECREATION. FRED DUNN-RUIZ--AS PRESIDENT. ALL THE COMMITTEES AND THEIR HARD WORK. DIANA COOK AND BILL UBER--ON WASTE MANAGEMENT AND WATER. IT IS VERY DISAPPOINTING TO HEAR CRITICISM AROUND THE PARK. I DO NOT THINK PEOPLE IN THE PARK REALIZE HOW MUCH TIME THESE PEOPLE SPEND DOING A GREAT JOB FOR US. IT SEEMS THEY HAVE BROUGHT US A VERY GOOD MANAGER, BOB KOGER. WE WISH HIM THE BEST.

THANKS *JIM AND NATALIE CLARK*

1.0 Roll Call at 9:00; Acting President/Secretary Fred Dunn-Ruiz led the meeting. President Jack Fisher was absent. Also present were Vice President Frank Haswell, Treasurer Claude Lindquist, and Recreation Director At Large Bill Eckard. Some 40+ members were also in attendance.

- a. Invocation was led by Bill Eckard.
- b. Late items added to the agenda; 4.a.9.c. Regarding I.d., operating procedures, a motion was made that no motion would pass with less than 3 aye votes; passed. changing date of bylaws cmt, 4.a.4.1.
- c. Report from Executive Session of July 17, 2004, Jack was to activate an ad-hoc investigation committee and was to ask the Past Presidents to do this. Interviewed Brad van Loben Sels to be Associate to Bernice Lawrence and approved. Interviewed Earl Nathan Halliday to be new member and approved. Interviewed Betty Lou Dreiling to be Associate to Robert Charves and tabled pending more information. Interviewed Dawn Lea Rundell to be Alternate Associate to Ron Rundell and approved. Interviewed David N. Houge to be Associate to Norman Houge and approved. Bob reported that he had a discussion with member re: the comment made at the last Board meeting and that He, Bob, was in error. We decided to run an apology in the next Bulletin. Jack will be on vacation August 9-28 and asked Fred to chair August meeting.

On July 31, 2004: Voted to approve Betty Lou Dreiling as Associate Member to Robert Charves.

On August 6, 2004: Fined a member \$1200 for an unaffiliated family member who has not vacated premises in a timely manner. Voted to allot \$1000 more toward the cost of bocce courts. Agreed to change December meeting to the 11th.

- a. Excluded 2.e & 2.f for later review & interviews with prospective members.
- d. Consent calendar, approved July 17, 2004 minutes & July 2004 Financial Reports.

3.0 Manager's Report

- a. Daily Reports
- b. We have been given permission to start clearing the riparian corridor; posters are up for volunteers needed. We hope to have a big team of horses come in to haul away the cut items. A quote will be given on Monday on taking the brush up to Ocean Street Extension for chipping, guessing at \$5600. On the Washington Walkway permit, the County is requiring 2 copies of the engineer-stamped plans. \$4230 is needed for supplies for the Office parking area, patch paving & striping. \$11,000 is the total needed for all these 3 projects to be done before it rains. The Social Hall use fee rebate is requested for an Eastern Star group. Last weekend 5-6 people showed up to help clear the river; our deadline is Sept. 20. We are primarily clearing any islands, starting from below Sandy Beach & going downstream, so far we are down to near the Powder House. Bob Sand & son have offered to clear the island by the Middle Beach. Diana Cook stated that both the Washington Walkway retaining wall & the paving/striping at the Office parking area are capital items. 3.b. A member, whose allotment has been overgrown & is a fire hazard, has turned over his allotment's care to his daughter. 3.c. Re: a reported septic leakage onto a neighbor's allotment, Tom's Septic has been contracted & is seeking permits; they wanted to install the system in the street, but can't because that would be too close to the water lines. 3.e. A Plan to fix flooding caused by road paving, at Edward's garage, Dunn-Ruiz's garage, Wunce's, & Eneboe's stairs, correction of paving is also a capital improvement. Bob is to write up a plan to take care of these; he will have this by Monday morning. 3.f. Reported flooding problem at 370 Eastern Star; the drains were put in by Granite, & there is a difference of opinion on whether the flooding situation is current or corrected by the most recently installed drains. The reporting member requested to meet with the BOD. The Bocci court installation work will start a week from today, on an hourly basis, which will be cheaper for us, within budget, by an individual (from Granite). We will supply the materials; it will take 2 days, then it has to set about 4 days before it will be usable.

4.0 Unfinished Business

- a. Committee Reports
 1. Assessment Study - Malcolm Kirby; no report.
 2. Budget – Diana Cook; still waiting for something from Long Range Planning.
 3. Building – Bill Hardwick; a. Manager Bob Koger instructed Member to not put in wall until he gets County approval.
 4. Bylaws – Bill Hardwick; John Mancini, wants the BOD meeting month when the Nominating Committee is appointed moved from March to February, & the selection process of nominees be announced in March, thereby giving 30 days' time for non-selected people to gather signatures in order to be on the ballot. John was requested to write this request up for a vote of the BOD at the next meeting. John is willing to have it up for vote at the next annual meeting, in order for there to be no added expense.
 5. Dam – Malcolm Kirby; not present. Fred attended meetings with our attorney and Fish & Game. He believes we are close to an agreement for a dam for next year. Fred recommended the agreement cover at least 5 years. There is likely to be renewal fees for permits, something like \$150.
 6. Emergency Preparedness – Greg Laskey; no report.
 7. Emergency Response Implementation Team - Doug Hipsley; a revised incident report was offered for adoption consideration. It needs to be reviewed by Manager with the committee, to see about ease of implementation, and go with it, without any special BOD approval.
 8. Historical – Barry Brown; the committee has started reinstallation of monuments, having already installed the cannon monument sign in Section 1, at the end of Joppa. They hope to do 2 per month, and the committee is eager to hear responses, corrections, additions, etc. They also plan to have booklet available at the Office for people to use in conducting a self-guided tour, hopefully by 2005. Thanks were given by Fred to the committee members Barry Brown, John Drew, Joanne Nelson, Bob Morgan, Don Moore, Cyndy Crogan and Pat McDonald.

analyzed the different bank accounts, which have a current interest rate from .1 to .175%. He hopes to be able to increase the interest rates significantly. A motion was made to authorize Claude to make changes to maximize interest, giving the BOD regular reports along the way. Passed. In the budget, the highest item is at \$206K for employees; the next level is for water, the 3rd level is for insurance. Detail work is needed on insurance items, to be worked on by the Insurance Committee, which is now Jim Langford (willing to chair) & Britt Thompson; others are welcome. October 15th is the renewal date on our policy. The draft audit is just arrived; Bookkeeper Pat Herzog has yet to proof it, since she has been on vacation.

c. Insurance does not cover volunteers; only volunteer firemen. The Insurance Committee will research this, for multiple aspects of rewiring the Social Hall and other items. It was suggested that Hold Harmless forms could be used. Electrical work in the Social Hall will be costed by Bob Biendle before the next meeting. The plans for a storage shed/deck are currently not funded; it is hoped that the Recreation committee will fund

d. Home Sales; discussion of proposed changes in procedure has been tabled until next month; in the meantime, the BOD will try to come up with a motion to act on, if need be.

e. PUD letters; no hard copy background items, so no action. Member input will be sought.

5. NEW BUSINESS

a. CERT Graduation Party Costs; approved.

b. deleted

c. AED Purchase (defibrillators); \$1295 plus tax each; \$2590 for two. One for Office, one in Section one/two would be a good minimum. For IRS purposes, they could be a capital expense. It was moved to purchase 4; approved. Ray Hoffman is to inform the committee. Don Moore informed us that the last two 9-1-1 calls did not come through our system. Don is looking into a solution.

d. Town Hall meeting dates; we have BOD open meetings; tabled for next month.

e. Mailroom Policy; to publish as proposed in bulletin, seeking responses.

f. Paintball gun use; bb guns; all guns; defacing & disrespecting OUR OWN property. A discussion ensued on the possibility of making a rule re: all or some of the above. Also expressed was the belief that PARENTS should control that which their kids use. No action taken.

g. Refund of Use Fee; the group requesting this did significant cleaning of floors, etc. and are objecting more to the size of the use fee, rather than that the Social Hall was dirty. Tabled for further research on fee schedule; to be revisited next month.

6. DISCUSSION

(a) **Member Changes:** none

(a) **Associate Member to Member Change:** none

(b) **Member to Associate Member Change:** none

(c) **Associate Member:** none

(d) **Alternate Associate:** none

(e) **Members Pending** (see attached listing).

(f) 7/12/04 Incident Report, loose dog, Section 3; BOD will send letter to Member warning them to control dog.

(g) 7/14/04 letter from Fireman's Fund

(h) 7/20/04 Incident Report, impassable path, excess watering, Section 3.

(i) 7/21/04 Incident Report, excess watering, Section 6.

(j) 7/31/04 Incident Report, vandalism, Section 6.

(k) 8/02/04 Incident Report, fire crackers, Covered Bridge.

(l) 8/05/04 Incident Report, pedestrians endangered by vehicle, Section 2; BOD will send letter to driver regarding unsafe speed.

(m) 8/06/04 Notice of Public Hearing, Section 6; moved to Executive Session.

(n) 8/01/04-8/06/04 Incident Report; broken lights.

(o) 8/16/04 Incident Report; water under house; BOD will send letter to both neighbors involved.

(p) 8/16/04 Incident Report; noise from neighbor's yard; BOD determined that noise level was ambient background noise & not a violation of Park quiet hours.

8. CORRESPONDENCE

(a) Correspondence Log; BOD will send a letter to a member re: illegally parked vehicles & give deadline before towing.

(b) 7/12/04 letter from member re: allotment concerns, Section 2; BOD will call member regarding unsightly allotment.

(c) 7/31/04 letter to First Presbyterian Church volunteers.

(d) 8/05/04 letter from member re: manager letter dated 7/24/04; moved to Executive Session.

(e) 8/06/04 letter to member representative re: improvements occupancy, Section 6.

(f) 8/06/04 note to manager from member's representative re: signed Bylaws, Section 6.

(g) 8/08/04 letter to manager from member re: children's use of wheeled conveyances, Section 1; Manager has dealt with this.

(h) 8/13/04 letter from manager to member's son re: residency, Section 1.

(i) Letter from manager to member re: dog.

(j) Letter from J. Fisher to County Planning Dept. re: PUD.

(k) Letter from County Planning Dept. re: PUD.

Recessed at 12:15, reconvened at 1:15 and adjourned at 2:30

9. Long Range Planning – Chuck Buchanan; the committee met July 31st. It recommends to the BOD to select 1 of 2 firms to do the reserve study. The two companies investigated are Helsing Co. or Bob Cox & Associates (local). The Reserve Study would provide information on assets with useful life, to estimate when particular maintenance is needed, then schedule items over 30 years. Then we could form a budget for long term needs. These companies also make a funding schedule for these budgeted items. The cost is approximately \$5600 or \$4800, respectfully. Also considered were 3 other companies. One didn't look too professional. One was for \$15,000. The committee decided these two recommended were the best for the most reasonable cost. Only Cox has been in the Park, conducted by Chuck, & he returned alone before making his proposal. The references on these 2 companies were also checked, with only positive remarks found. John Mancini felt we really needed a standing committee to follow up on this report on a yearly basis. Fred responded that the Long Range Planning committee is a standing committee. Chuck thought this review could happen within the committee, hiring professional help for expertise we don't have. Barbara Monti offered a statement on the Reserve Study. She offered to use PPMC members, already contacted & confirmed as willing, with varied expertise to do the assessment project. Barbara asked for several months in which to complete the survey, at the latest the end of December. The Covered Bridge has been excluded from the LRP survey, but included are the roads and the water system. The BOD agreed it was worth a delay to give this volunteer group the opportunity to try to complete the survey & projections, with the caveat that the BOD has the choice to also reject their results if not sufficient. It was moved to have the volunteer group do an initial plan, and to submit their report 1 ½ weeks before the December 11th meeting, so the BOD can become familiar with the report before needing to vote on it. Accepted. The BOD is very grateful for all the work the LRP committee has done in researching professional services.

10. Orientation – Bill Lind; 5 people were oriented today.

11. Recreation – Bill Eckard; great job done by Charlotte & Jim Reynolds, Tiny & Bob Sand for the Flea Market, & all the many, many volunteers, with dessert by Eva Lindquist every day. We need a chair for next year & new format, if they want to change it. Next Friday is the Golf Tournament, which has a full sign up. Section parties are next Saturday. The Quacker Regatta is the Sunday following, at 11:00, with board members to dunk and hot dogs to buy. The following weekend are Labor Day weekend activities; that Saturday afternoon 4-7 we will have a Castle Jump for kids of all ages, with the potluckers (bring a dish to share; fire ready for hotdog roasting) gathering at 5:30 & eating at 6:00, then dance from 7ish until 10ish. The Food Concession stand will be Saturday and Sunday at the Section 4 tennis courts; volunteer cooks and sellers are needed. Trophies will be awarded and/or announced at the dance. When you sign up for an activity, we are asking that an allotment number be included, for identification of unknown names. A Halloween party is coming up. Stay tuned to your bulletins.

12. Safety, Industrial – Ted Keller. No meeting called; Diana Cook is willing to call a first meeting, at which the chair would be elected. BOD accepted. Fred will call Ted

13. Staking -

a. Staking Log;

b. Corum/Polglase; a suggested solution has been made, with one party not yet decided. No board action required at this point.

c. Leong/Bales must be postponed; B. Lind has been on vacation.

d. Jacobson request; a site barrier could be put up by the Park, such as the Historical Committee recommended, limiting access to the bunker, Park pay. Estimated cost of a trellis of crossed-slats, covered by native vines, with wind & light able to flow through, 4/4's or 4/8's, where one could walk around on either side, so as not to be a fence, and a couple of feet off the ground, so fauna could wander around, under, etc. is approximately \$200. Approved.

14. Streambed Alteration – Bob Koger, already discussed.

15. Trees – Steve Taylor; not present. The committee minutes didn't indicate what action is to be taken. Upon explanation from Claude, the committee liaison, the Board approved the recommendations. Because they are a fire hazard, bays/laurels should be removed from the Park by Park crew, if in common areas, and by members, if on individual allotments. Fred will place a notice in the bulletin. A process is recommended to be incorporated by Manager/Office, working with the tree committee for any modifications. Pfaff Section 4 boundary line locating is to be requested by Bob.

16. Vehicle - Greg Laskey; getting prices for Bob Koger.

17. Water/Roads – Malcolm Kirby; not present. The status was requested on hooking up the water tank in back of the Social Hall. Bob said it couldn't be done until it is decided what lines are to be used in the continuing water system. It was discussed and agreed that the tank could be hooked up, regardless of system. Bob is to check the depth of the gravel. Money was budgeted over a year ago, out of the capital budget. Roads are cracking on Amaranth. Bob is to investigate, & he will connect with Granite for repair. It was asked if all the new roads should be sealed before the rains start? Bob is to arrange. Claude asked if the storm drain system was included in plans that are out to bid. We have received 2 bids and are waiting on a 3rd bid. A new street digging request form was considered and, as amended, was approved.

18. Haswell Committee report - Perry Olsen; the donation, as specified in the trust document, is for maintenance on recreation facilities of PPMC. The committee suggests up to \$5K be used to install a fish ladder on the dam, if required. The balance may be used for a new electrical wiring system in the Social Hall, as this is most used by most people. The committee also felt it is important to have a notice in the bulletin honoring Vance Haswell's gift; the committee is working on that notice. It was moved to accept the committee's recommendations; approved. Barbara Brown reported some \$9-10K is still sitting in the Memorial Fund. Betty Gladding and Alda Houchin were the Memorial Committee. Bill Eckard suggested the Historical Committee use this money. Barry Brown needs a fair amount of change to restore the bunker, in addition to what the Gardner family can fund for that purpose. Claude is to look into the Memorial fund situation.

b. Treasurer's Report - Claude Lindquist; we are currently under budget by several thousand. Our bank deposits total just under a million. The Treasurer's bulletin items have a new format, which hopefully will be informative. Claude has

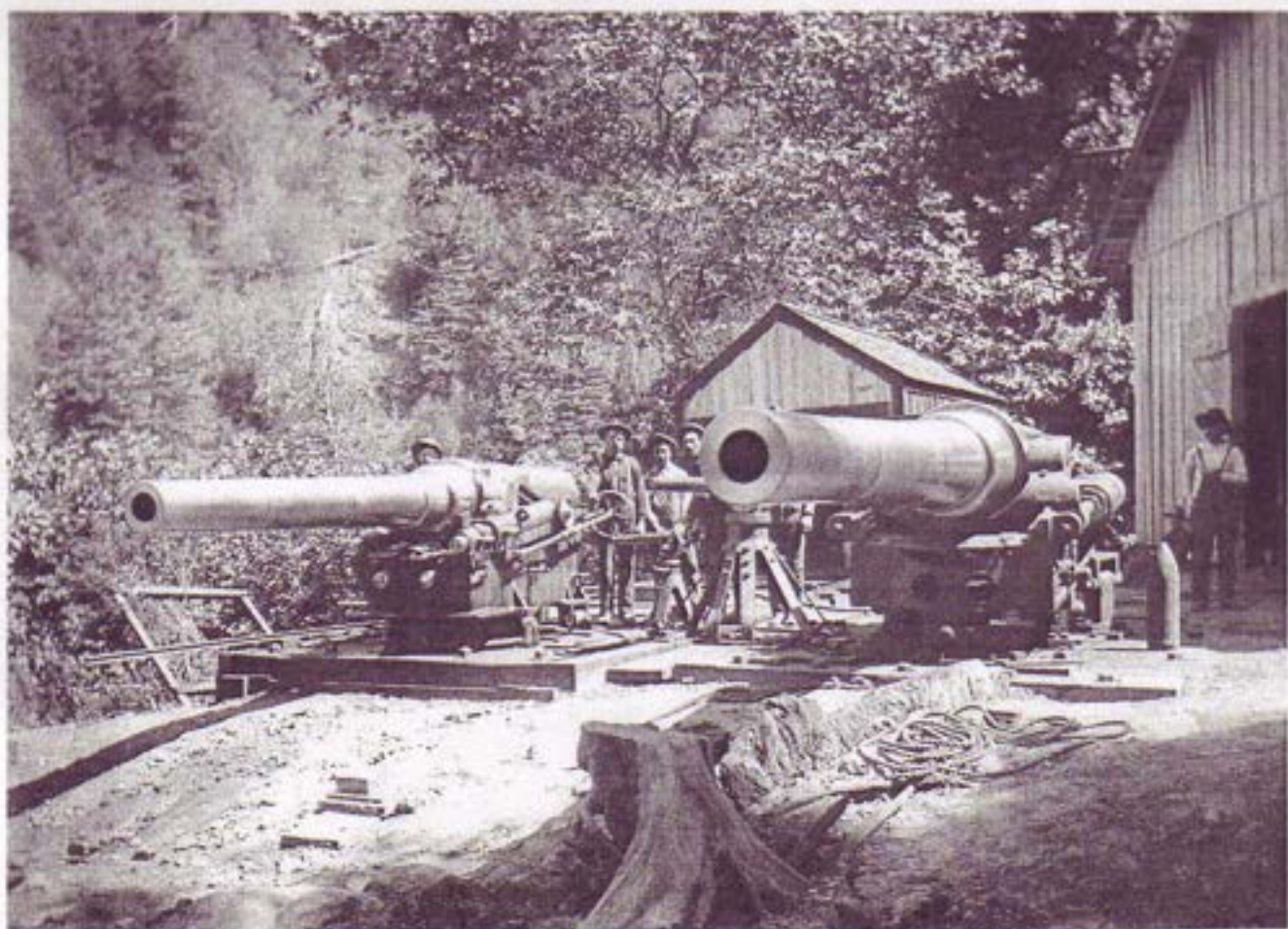
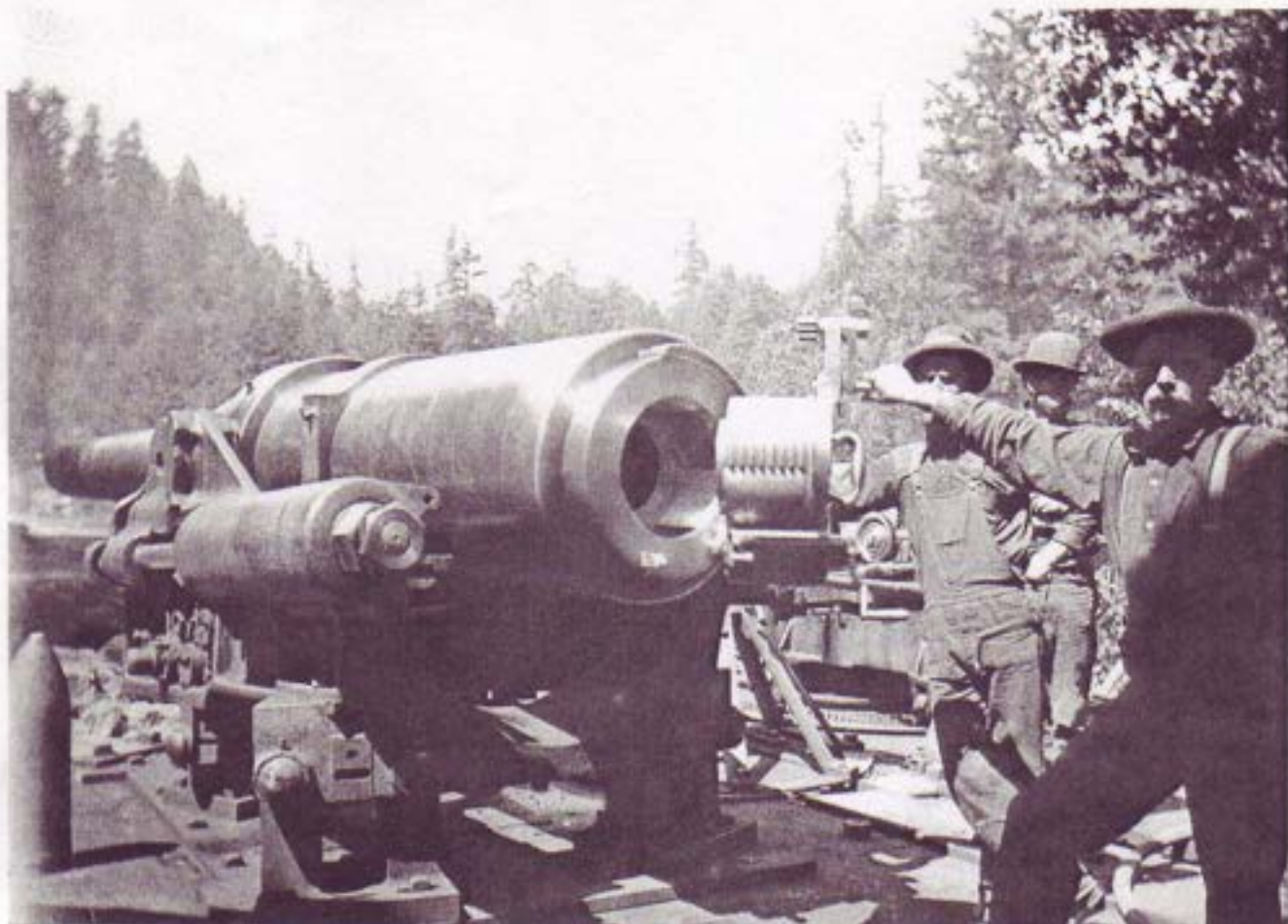
For Sale By Member

Member's improvements offered for sale as of August 27, 2004. All allotment use privileges and Membership are subject to the approval of the Board of Direct

IMPORTANT NOTICE

The sellers solely provide the descriptions of improvements for sale. Such information is not verified or checked for accuracy by Paradise Park Masonic Club, Inc. The Club does not warrant, and disclaims any responsibility for, the accuracy, truthfulness or completeness of any information provided. All questions about allotment improvements should be addressed solely to the seller.

ADDRESS	MEMBER	PRICE	DESCRIPTION
SECTION 1			
462 York Ave.	Patricia Herzog 458-9841	\$178,000	Lovely newer home. Bright sunny lot w/bright interior. Tastefully decorated, 2 BR, 2 BA, 1,100 sq. ft; fully insulated w/forced air furnace plus gas log stove, Jennair range; island in kitchen; full attic, walk-in closet in MB, 1 car garage; large deck and side brick patio. Includes all appliances.
SECTION 2			
362 Eastern Star	Norene S. Hansen Call Alcinda for appt. 831/425-2842	\$172,000	Private/sunny location, 2BR, 1BA, >1,917 sq ft improvements; basement/utility rm; 120 sq ft garage & lg deck; new 30yr roof in 2002, new Hot Springs spa/hot tub, remod. interior incl carpet & ceramic tile; auto-sprinkler system, veg. garden & fish pond, generator inc. View online at http://64.166.244.241/382ESR
364 Eastern Star	Jeanne Jelcick Call for Appt./info. 831/429-2215	\$179,500	Cute little 4BR + sleeping loft or 2BR + office + den. Upgraded septic & electric. Modern kitchen, stack washer/dryer. Good sun & great privacy w/huge beautifully landscaped allotment. Call 831/429-2215, 426-7666, 325-3928.
SECTION 3			
216 Keystone Way	Ann Pfaff Contact Jim @ 831/818-4480	\$380,000	1 BA, 2 BR, 6,600 sq ft allotment, 1,212 sq ft improvements, new windows, doors, framing, vaulted wood ceiling, roof, deck w/river view, all new hardwood floors, forced air heating; includes gas range, built-in microwave w/vent, dishwasher.
226 Acacia Lane	Alcinda Walters 831/425-2842	\$199,000	3 BR / 2 BA home w/spacious yard, view of river, lots of sunshine. Remodeled LR & DR, rebuilt covered deck. Forced air heat, fireplace, refrigerator & WD inc. Price is negotiable.
SECTION 4			
591 Keystone Way	James M. Keeton 559/251-4396	\$165,000 cell 559/970-0911	1 BA, 2BR, 900 sq ft improvements, lg covered front deck, parking stall below, incl. 2 gas freestanding heating stoves, kitchen gas range, washer/dryer, refrigerator.
615 St. Augustine Ave	Norman Holbrook H 925/831-0678 W 925/931-9898	\$87,500	1 BA 1BR, 3,650 sq ft allotment, 725 sq ft improvements, private corner lot, carport, extra parking, knotty pine, wood floors, deck, near beach & tennis, good condition, incl wood stove, range, dishwasher.
644 St. Augustine Ave	Brian Kettmann 458-1831	\$195,000 SALE PENDING	BeachFront Home w/Great River Views; 2BR, 1BA. Newly enclosed family rm, Living Rm, Dining Rm & kitchen w/all appliances & wood stove, some furnishings incl., grass backyard on Middle Beach w/lots of Sun. Must See!
678 St. Paul Street	Sonnichsen/Stalker Deke Sonnichsen 650/326-7679	\$65,000	Cabin on Eagle Creek, 3 BR, 2 BA, large kitchen and large living room, dining area, electric floor heating. Appliances included: Refrigerator, gas range, and turkey roaster. Furnishings include Beds, chairs, and sofas.
SECTION 6			
114 Keystone Way	Myron Kegebein 831/425-5144	\$182,500 \$3,000 under appraisal	On San Lorenzo River high above flood; near park entrance; sunny allotment; new \$3,000 mahogany deck on front; attractive gazebo overlooking river; 2 BR 1 BA; laundry rm; new refrig, dishwasher, stone fireplace; double windows throughout; easy maintenance.
120 Keystone Way	Gordon Crafts 423-3228	\$350,000	Large 2 BR, 1 1/2 BA, location in front of Park, unhindered view of river and forest, improvement approx. 1,600 sq. ft., central gas heating, two phone lines, new roof, storage shed in carport, in and out driveway, ample parking. Room for expansion. Furnishings include: 1 MAC computer and desk
126 Keystone Way	Gretchen Williams 831/423-6043 or D/ Logan 423-8343	\$575,000 SOME FINANCING	3 BR, 2 1/2 BA, 3,000 sq ft improvements; 1600 sq ft decking, private river beach, sunken dining/living rm, bar area, 2-way fireplace, forced air heating, wine cellar. Perfect for full-time family or multi-family vacation home.
146 St. Alban St.	Larry N. Gilliland 831/423-8634 831/234-3129	\$300,000	2 BA, 2 BR, 1400 sq ft living + 480 sq ft 2-car garage on Keystone Way; just painted; lg deck in back, deck in front; storage shed; lg kitchen & all appliances; central heat & lg propane free-standing stove in living rm; new hot water heater.
155A St. Alban St.	Peter M. Parkhill 831/423-9168	\$270,000 SALE PENDING	3 BR, 2BA, about 1900 sq ft living space + single car garage; carport + add'l parking; newly remodeled; open beam ceiling & rock fireplace.
170 St. Bernard St.	Hazel Kindwall C. Unger 458-3086 Or 760/758-3548	\$200,000 NO FINANCING AVAILABLE	Sunny lot, 2 BR, 1 1/2 BA, new double pane windows, 1 st floor laundry room 1/2 BA, workshop garage, guest cottage, 2 nd floor 2 BR, BA, den, eat in kitchen, living dining rm, pantry, office alcove, newer dbl wide frige, W&D & stove; make offer.
175 St. Bernard St.	Larry Coburn To see, 423-5343	\$255,000	1 BR, 1 BA, 1100 sq ft w/deck overlooking river; new 1990/foundation engineered for 100 yr flood; built to earthquake standards. To see, 423-5343; message, 802/868-9262.
189 St. Bernard St.	Miriam Kourik 831/426-8224	\$235,000	Split level home, 2 BR, 1 1/2 BA, new septic tank, new roof; sunny with nice yard; allotment located in front of the Park.
191 St. Bernard St.	Malcolm Kirby 831/460-0544 By Appointment	\$499,000 Financing	Upstairs - 2 BR, 2 BA, office, kit, vaulted great room, rock fireplace, A/C, Deck. Downstairs - 2 BR, 1/2 BA, living, kitchenette. Workshop. Separate entrance, 2450 sq.ft. Attach Garage. Highway 9 Bus Stop. Wall-to-wall glass—overlooks open space, river.



THE CANNONS

In the picture to the right you will see three cannons: one with a bore of 8", one with a bore of 6", and one with a bore of 2" which sits in the middle of the larger guns. The largest cannon was delivered to the California Powder Works by the Inspector of Ordnance, Omaha, Nebraska on June 29, 1894. The barrel alone weighed 31,563 lbs. and occupied one whole flatcar. The carriage and fixtures, weighing about eight tons, came on a separate flatcar. Note the 8" shell standing next to the large cannon; it stands 29" tall and weighs over 250 lbs.

These cannons were used to "proof" the gunpowder made at the California Powder Works before shipment. This was done by loading a shell into the barrel, inserting the appropriate number of powder charges behind the shell, closing the breach, and then firing the gun up river. To test the strength of the powder, the shells were fired through separate man-made wire screens placed at differing specified distances downrange. Through an electromechanical device, the operators were able to calculate the velocity of the projectiles and thereby determine the quality of their powder. In warfare it is critical that the powder used is consistent from one shot to another to insure accuracy. When the cannons were about to be fired, a large bell was rung to warn the workers that there would be a loud report coming soon. As you might imagine, any unannounced explosions in a powder-making area were to be feared. The sound of the cannon's roar could be heard all the way to Monterey if the wind was right. A *Santa Cruz Surf* newspaper account of 1894 states, "Government inspectors of powder have pronounced the product of the Santa Cruz Works to be the best for ammunition purposes of any made in the United States."

Still to be seen in this area at ground level are a few of the large bolts that fastened down the steel plates on which the cannons were mounted. Using a metal detector, some of the spent shells can still be found embedded in the hillsides upstream; they occasionally wash out after winter storms and fall into the riverbed. An example of the largest shell fired at the Powder Works can be seen today in the Manager's Office.

PPMC Historical Committee, 2004